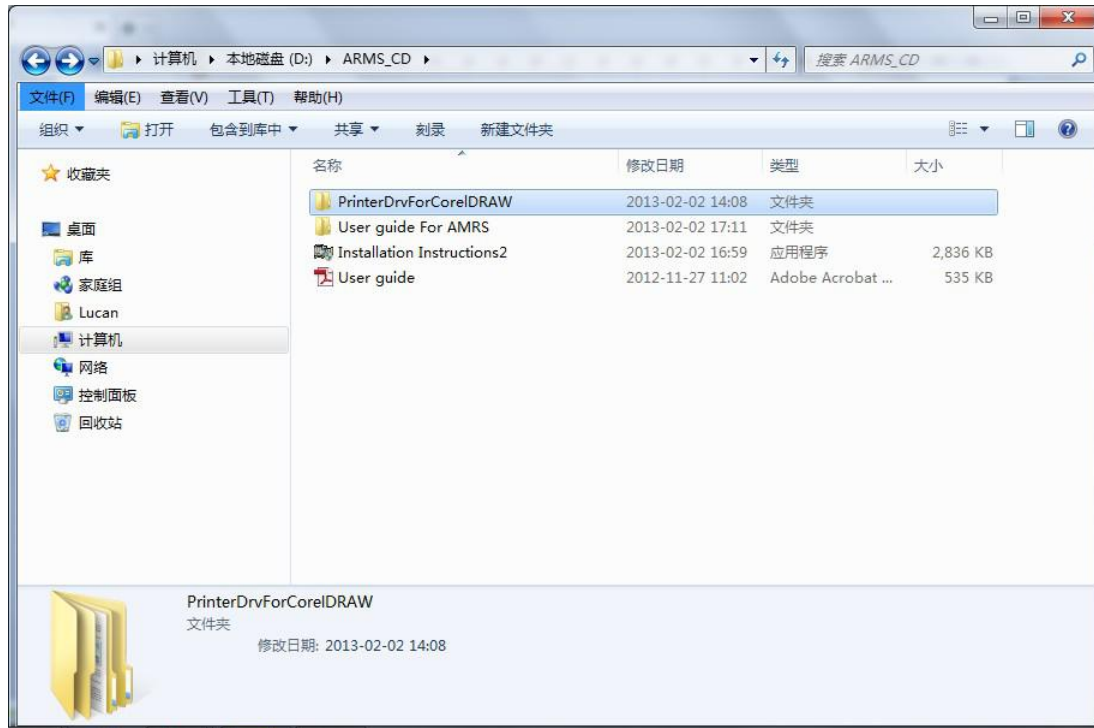




ANHUI WILLIAM CNC TECHNOLOGY CO.,LTD

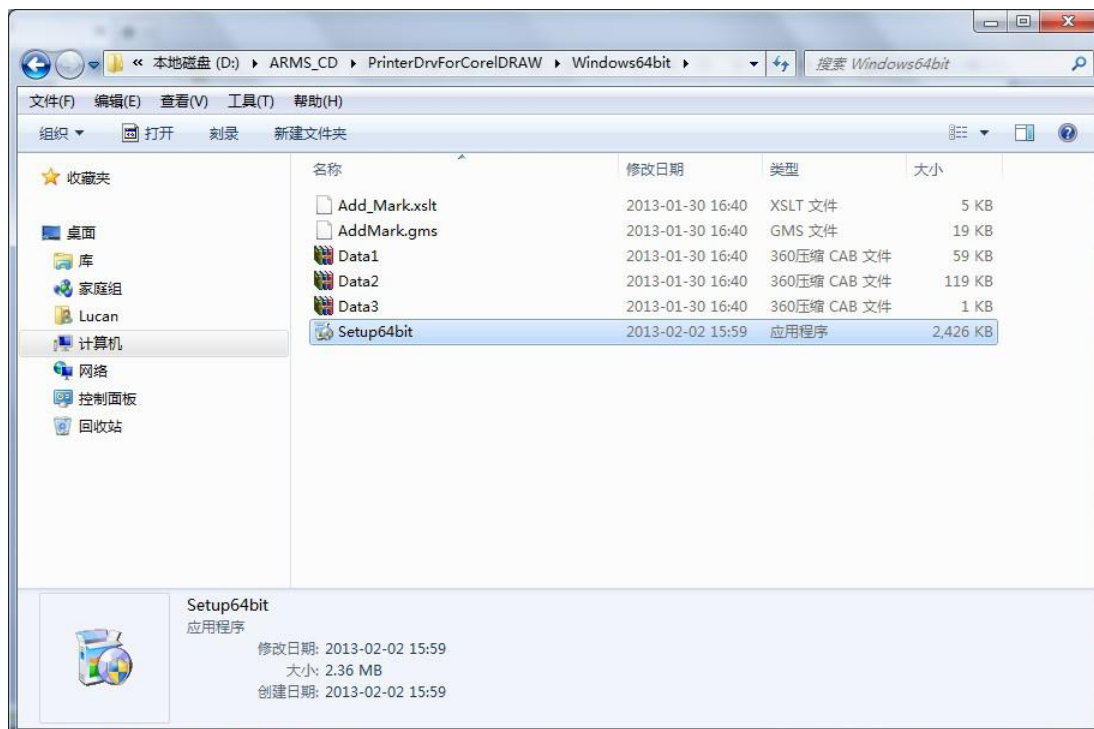
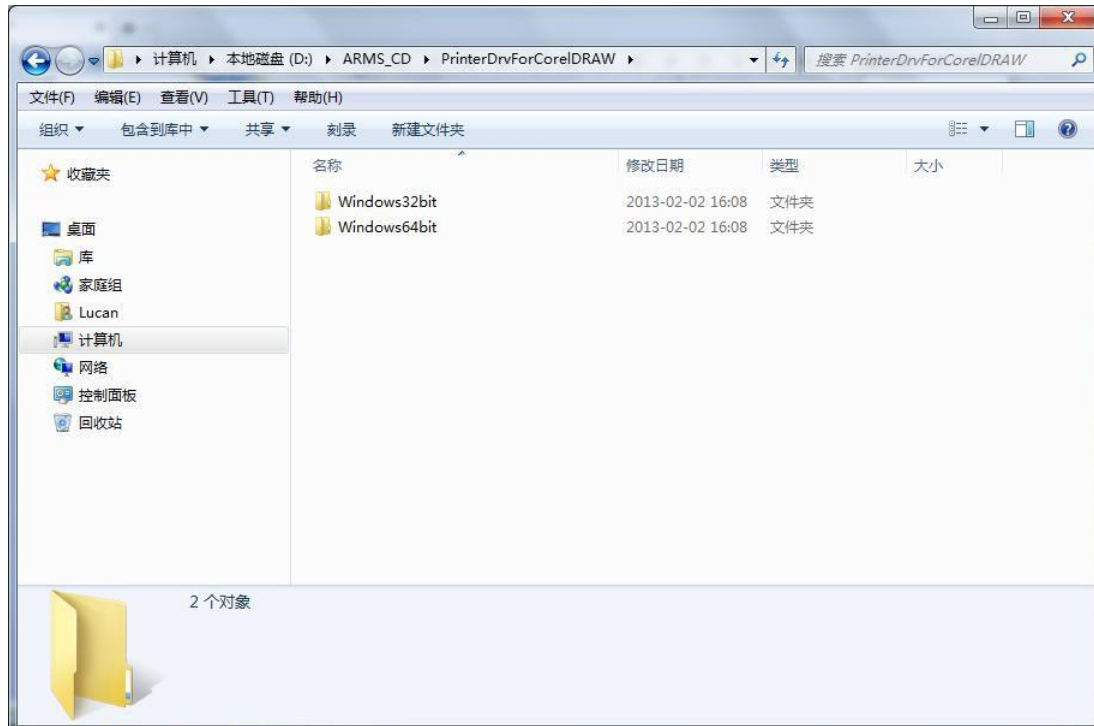
Guide for ARMS

- 1, Please confirm you have installed Coreldraw software (newer than 11 version)
- 2, Install ARMS Plug-in
 - A, Connect machine to computer through USB cable, switch machine on
 - B, Copy CD to your computer





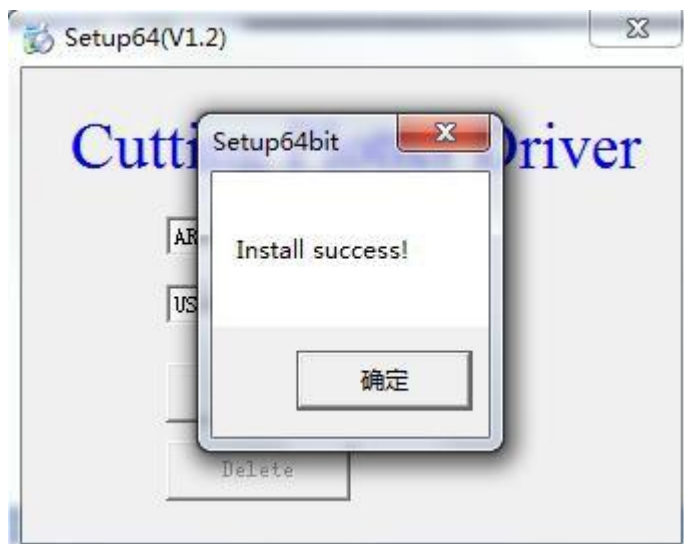
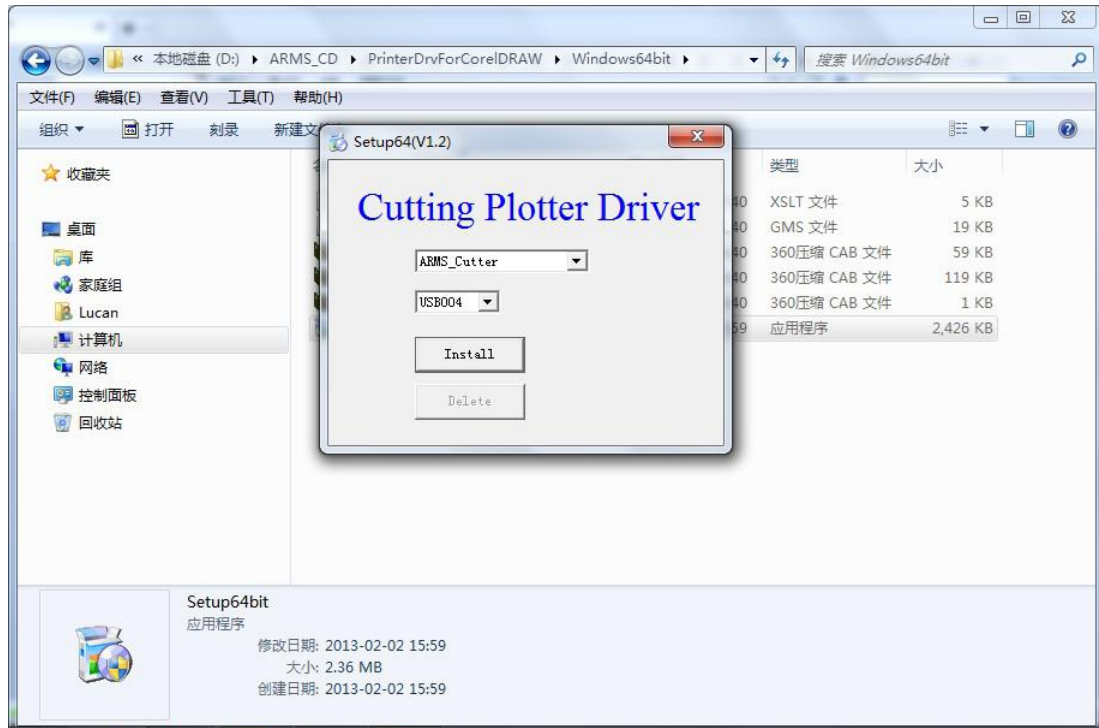
ANHUI WILLIAM CNC TECHNOLOGY CO.,LTD



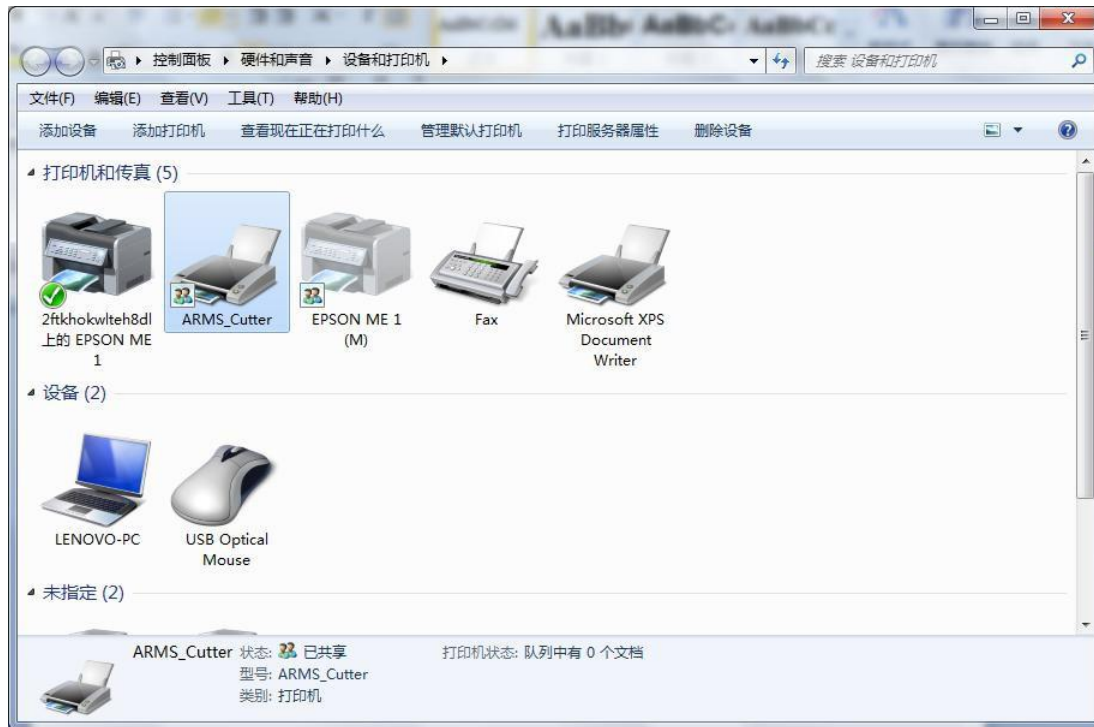
C, Plug-in drivers, one is for 32 bit, the other is for 64 bit, please select correct one according to your computer system, for 64 bit driver, maybe need to install “run as administrator” sometimes, Right click “Setup64bit”, select “run as administrator”, will be ok.



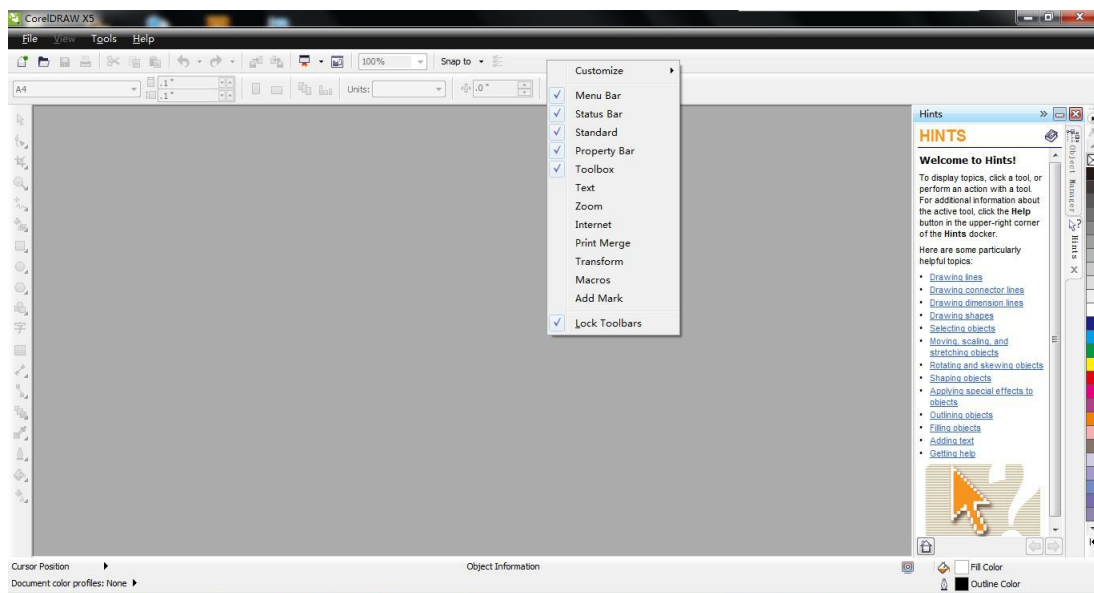
ANHUI WILLIAM CNC TECHNOLOGY CO.,LTD




After installing, you will find ARMS_Cutter under list of Faxes/Printers



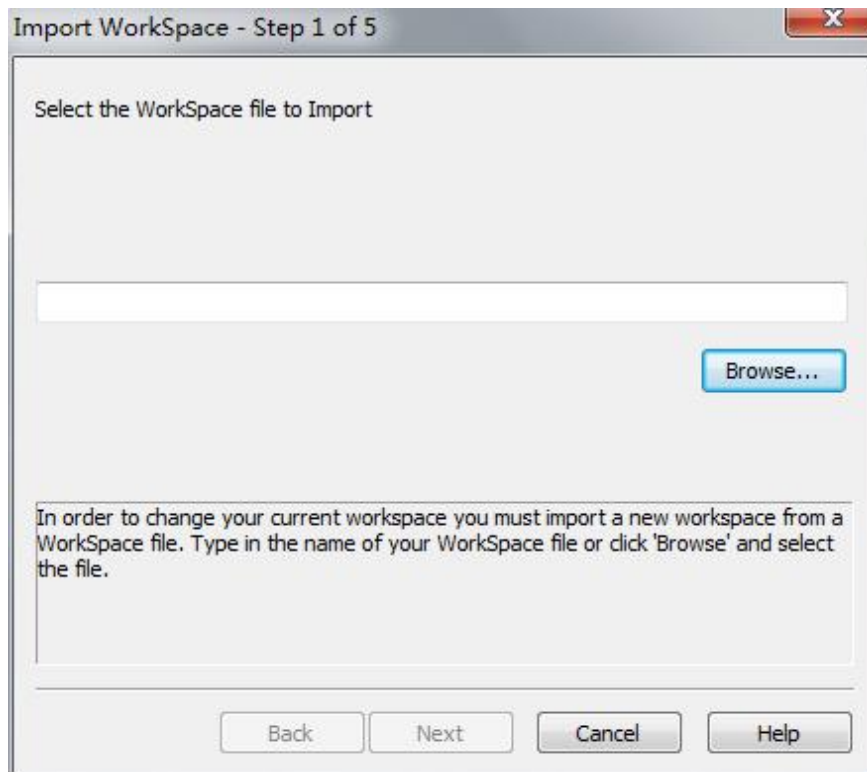
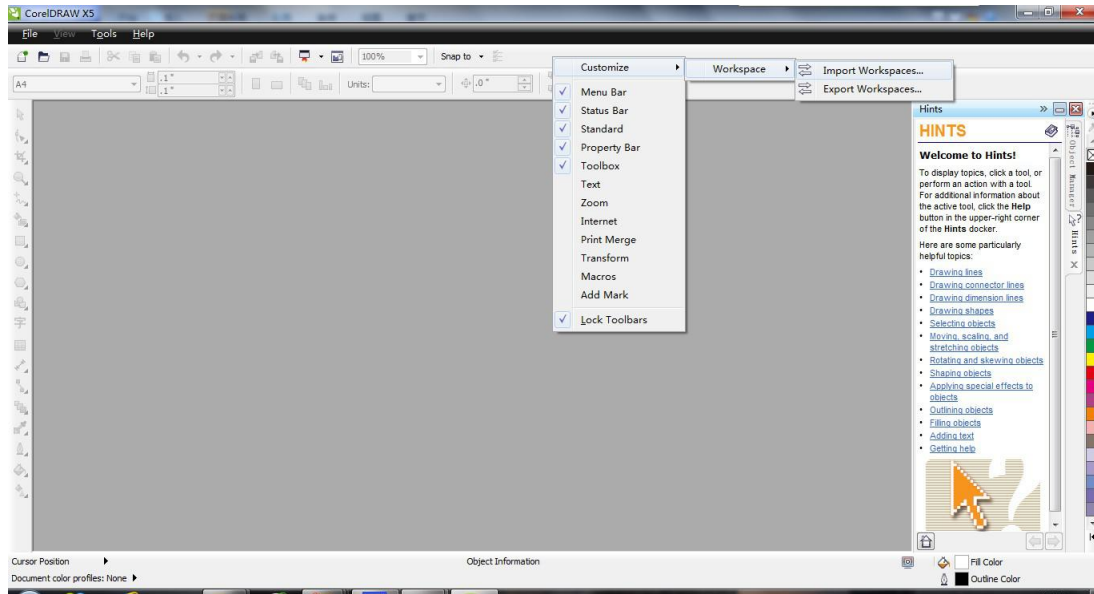
4, Open Coreldraw software, right click on the blank of top, select “Add Mark”, then you will find icon of “Add mark”.



If you cannot find “Add Mark”, please copy “  AddMark.gms ” to document of GMS of Coreldraw, for example: D:\Program Files (x86)\CorelDRAW X5\Draw\GMS;



ANHUI WILLIAM CNC TECHNOLOGY CO.,LTD





ANHUI WILLIAM CNC TECHNOLOGY CO.,LTD

Import WorkSpace - Step 1 of 5

Select the WorkSpace file to Import

D:\ARMS_CD\PrinterDrvForCorelDRAW\Windows64bit\Add_Mark.xslt

Browse...

In order to change your current workspace you must import a new workspace from a WorkSpace file. Type in the name of your WorkSpace file or click 'Browse' and select the file.

Back Next Cancel Help

Import WorkSpace - Step 2 of 5

Select items to import:

..... ☒ Add Mark

Select the items you want to import from the workspace you have chosen. By default all items will be selected.

Back Next Cancel Help



ANHUI WILLIAM CNC TECHNOLOGY CO.,LTD

Import WorkSpace - Step 3 of 5

Select WorkSpace Location:

☒ Current Workspace
☐ New Workspace

Importing into your current workspace will overwrite your current toolbars with the ones you have chosen. Selecting New WorkSpace will allow you to create a brand new WorkSpace based on the imported items.

Back Next Cancel Help

Confirm Import...

Your Selected Options:

Workspace Name:
X5 Default Workspace

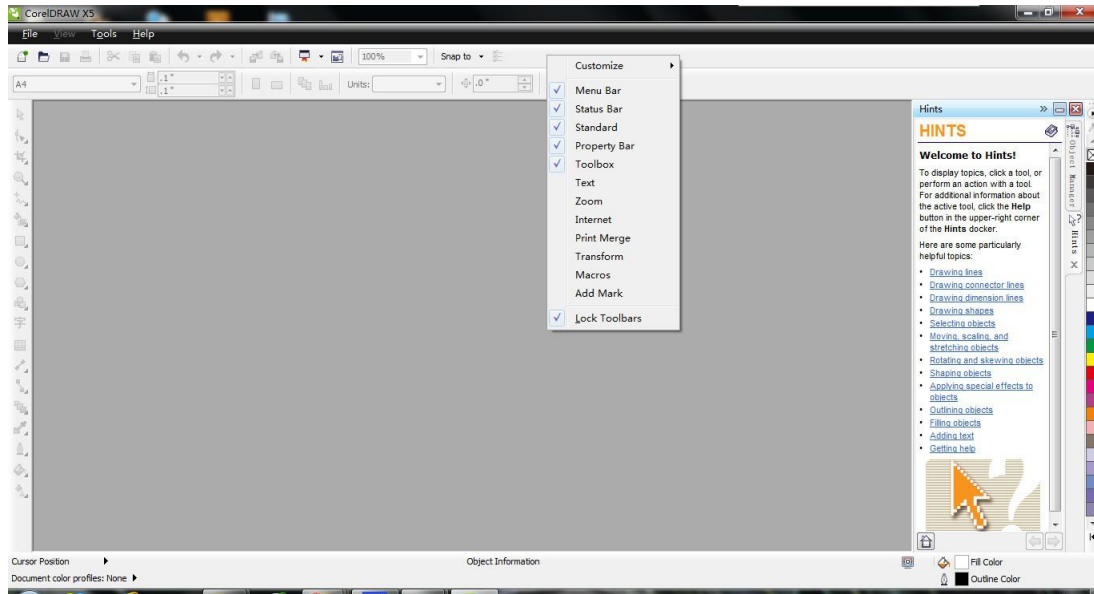
Included Items:
Add Mark

You are done! Please review the items you have chosen and if everything is correct click Finish. If you wish to change something use the Back button to navigate the Wizard.

Back Finish Cancel Help

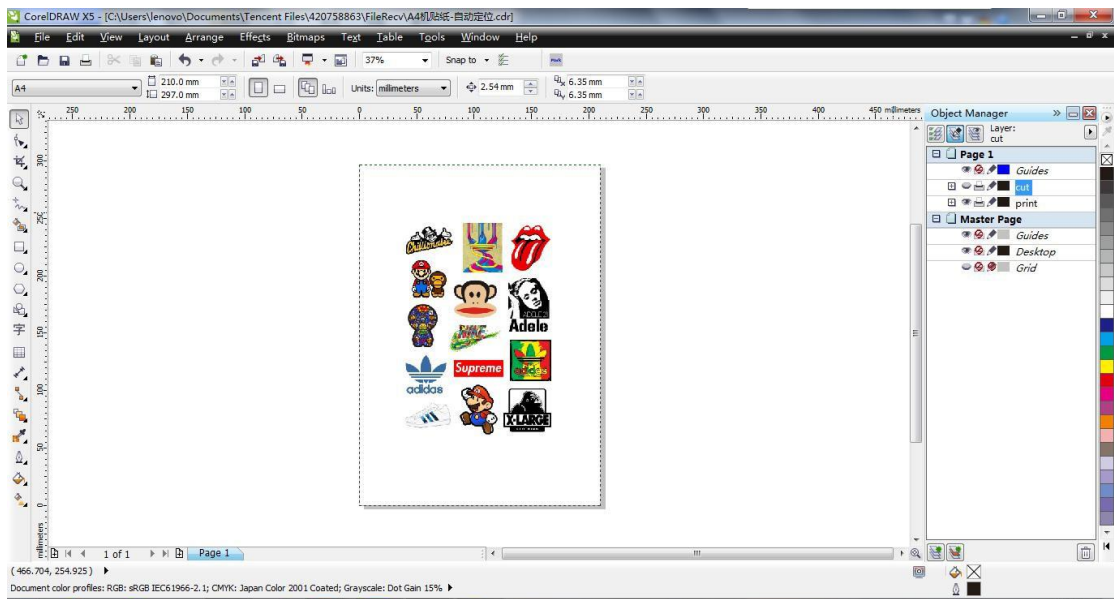


ANHUI WILLIAM CNC TECHNOLOGY CO.,LTD



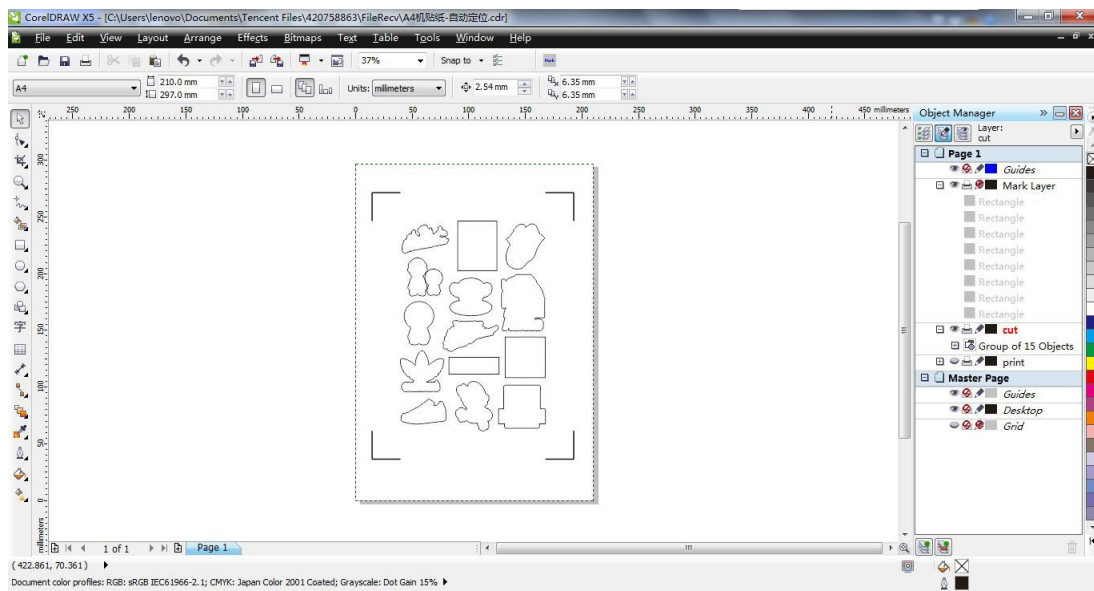
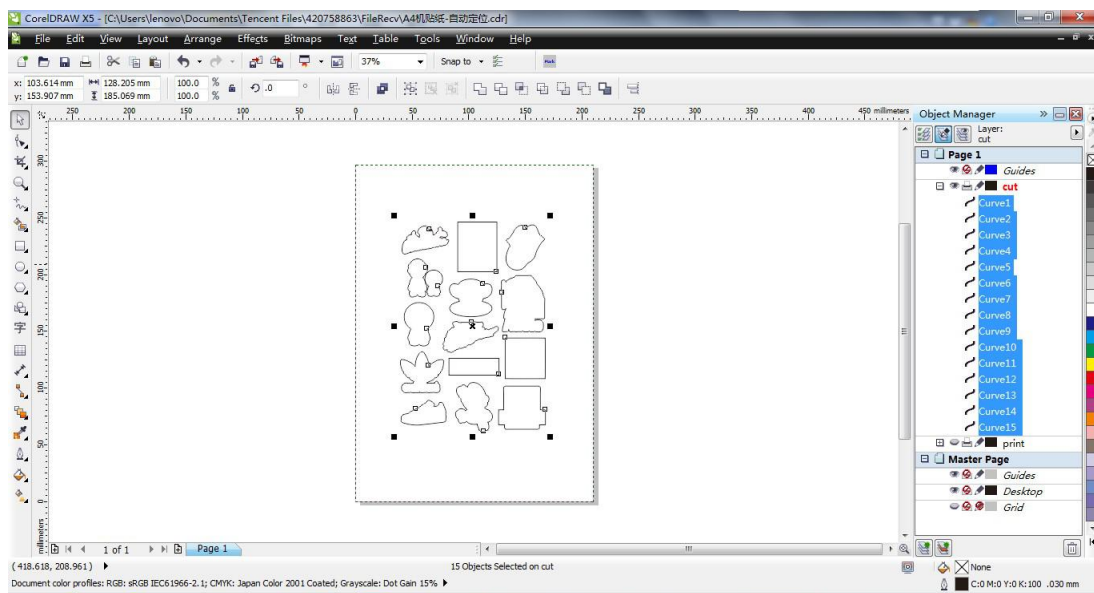
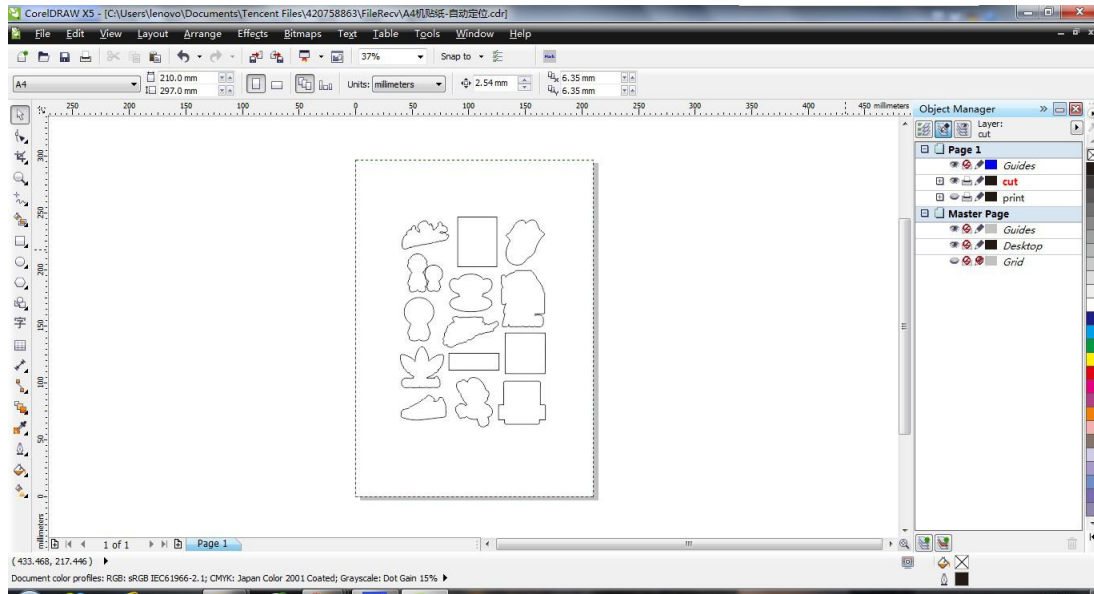
How to cut images?

1, Any images we want to cut which need outline, so machine knows how to work?



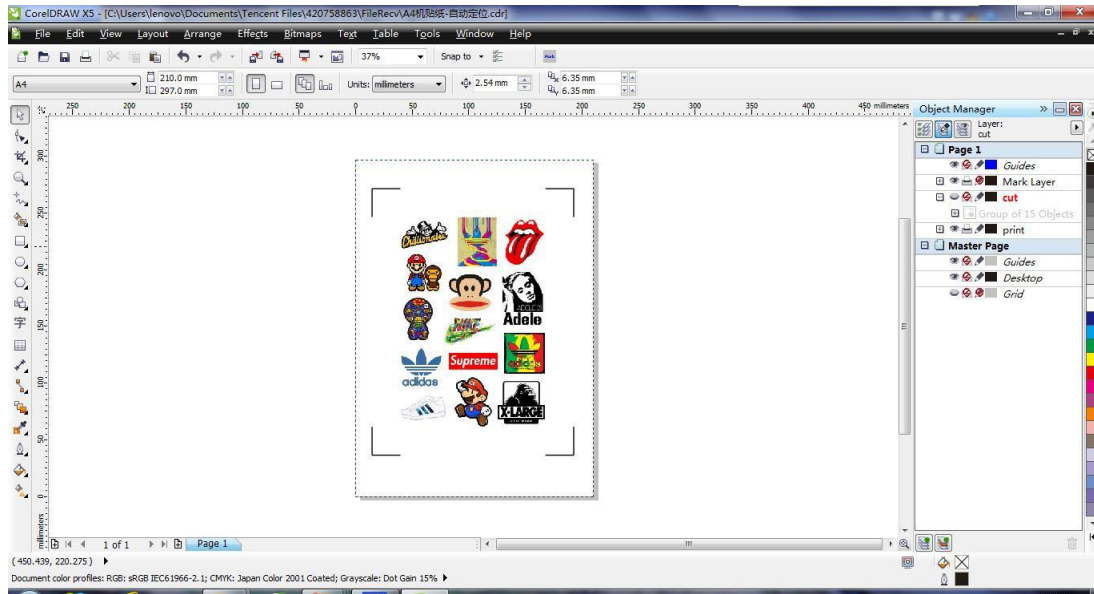


ANHUI WILLIAM CNC TECHNOLOGY CO.,LTD





ANHUI WILLIAM CNC TECHNOLOGY CO.,LTD



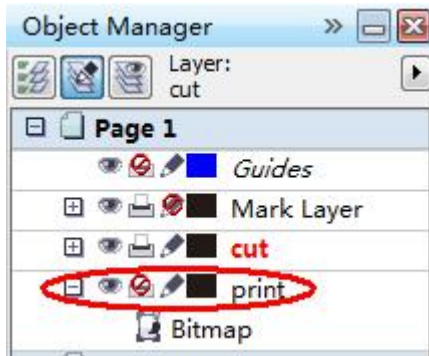
2, Put paper of printed images with 4 marks on machine, note: we need to rotate direction of paper, see the following image, left/top mark should be at right/bottom of machine, push “Laser” button, move laser close to left/top mark.



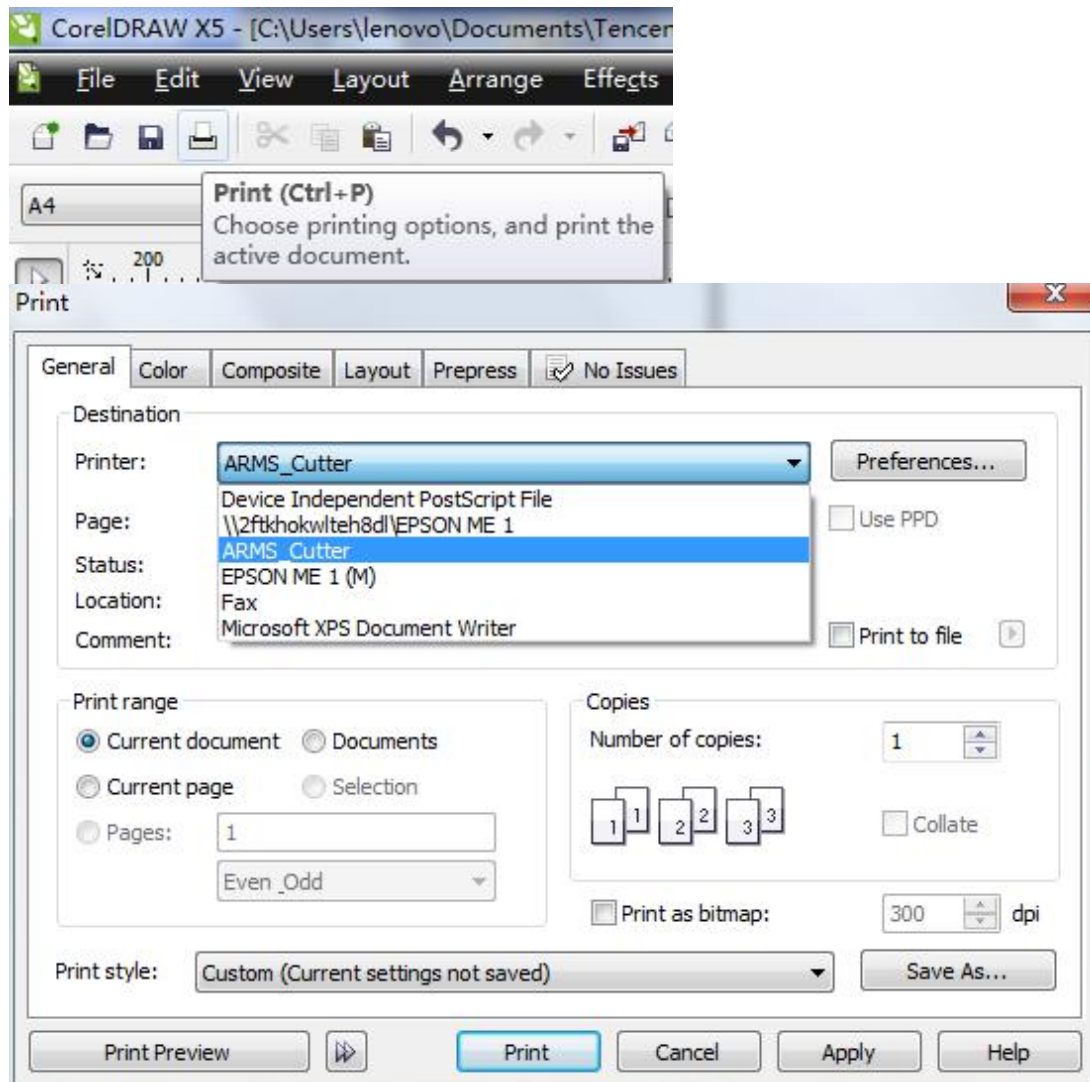
2, Select “Print”, select ARMS_Cutter as printer, layout should be top left corner.



ANHUI WILLIAM CNC TECHNOLOGY CO.,LTD

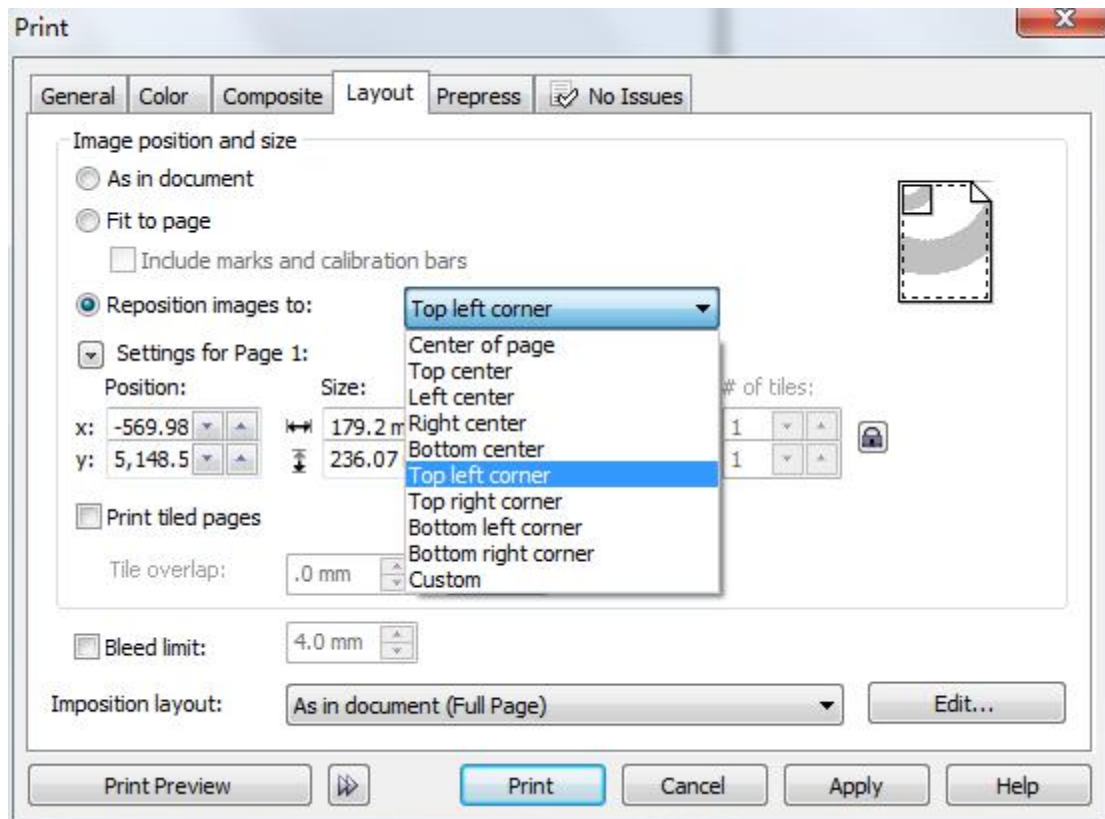


2、





ANHUI WILLIAM CNC TECHNOLOGY CO.,LTD



3, if you find contour cutting is not perfect, means offset than outline we want, please push “Set” button 3 times, you can change offset here, X, feeding direction, Y, carriage direction. Push “Set” 4 times, you will find “Sensitivity”, different materials, different values of sensitivity, normally, 10 is good for most materials.





ANHUI WILLIAM CNC TECHNOLOGY CO.,LTD

Tool X:-2.59
Offset Y:16.79

Sensitivity:
10