



ANHUI WILLIAM(VICUT) CNC TECHNOLOGY CO.,LTD

Metal Mould ATC CNC Center (Auto Tool Changer)



Features

1. Working table is casting iron one time;
2. All machine iron parts processed with high temperature heating treatment, then put into natural environment for more than 6 months, ensure no deformation permanent;
3. Machine parts processed by CNC Center, ensure high precision.

Application

Mainly used for milling on metal with high precision for mould industry, like stainless steel, aluminum, etc.

Technical Parameter

Model	VCT-M4242ATC	VCT-M6050ATC
Machine Size	540×440mm	720×550mm
Working Size	420×420×150mm	600×500×150mm
Spindle Power	Oil cooling 3.0KW ATC Spindle	
Spindle Rotation	7000~24000rpm	
Motor Driver	Japan servo motor	
Transmission	Ball screw	
XYZ Rails	HIWIN Square Rails	
Dust-proof System	XYZ High Quality Dust Cover	
Mechanical Accuracy	±0.012/300mm	
Engraving Speed	8m/Minute	
Idle Running Feed Rate	10 m/min	



ANHUI WILLIAM(VICUT) CNC TECHNOLOGY CO.,LTD

Data Transmission	System Default (Taiwan Syntec Controller 6MA)	
Support Format	HPGL G code or HPGL	
Working Voltage	380V/50Hz	
Net Weight	1000KGS	1200KG
Packing Size	1560*1310*2140mm(4.37CBM)	1760*1510*2140mm(5.69CBM)

Machine Details

Seq.	Picture	Detail Instruction
1		Machine body with cover: The whole machine construction is special in appearance design, showing concise and strong. The outer cover prevents dust splashing and reducing machine running noise.
2		ATC Spindle : The spindle is oil cooling 3.0KW Auto Tool Changer (ATC). It is fully programmable from 3000~24,000 rpm.
3		Tool Stock: 5pcs BT30 tools station on the back or side of machine body, this traditional way of changing tools is loved by most of users.
4		CNC Controller: Syntec 6MA controller special for ATC CNC, which is for high accuracy positioning. It is capable of USB flash drives and is very easy for users to do wiring and can save a lot of time. It supports 4 servo axes + 1 spindle, simultaneously interpolated axes can be 4 axes, and it has power failure protection function.








ANHUI WILLIAM(VICUT) CNC TECHNOLOGY CO.,LTD

5		<p>Servo Driving System: This is a fully closed loop servo system using Japan servo motors & drives. The motors are very smooth running and have very good acceleration and deceleration curves. Servo motor connects with Japan SIMPO reducer which can decrease and control Reverse Gap, ensure the working accuracy.</p>
6		<p>Central Oil Lubricator: Easier to lubricate the Guide units regularly, just pull it gently and oil will go when it is needed.</p>
7		<p>Cooling system: Use oil or other coolants to spray liquid to the tools during cutting, which makes the cutting edge smoother and protect the cutting tools.</p>
8		<p>Tool Sensor: Automatic tool length calibration and registration, it allows for easy and accurate “Z” zero position for single and multiple tool changes through the program, saves time & error-free.</p>
9		<p>Design software: the professional design software (Type 3, UcamV10, Artcam,etc.)is special for making 2D/3D drawing, saved it as G code which can be recognized by CNC router.</p>

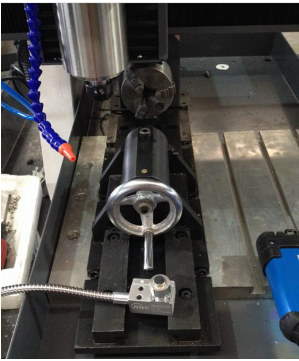


ANHUI WILLIAM(VICUT) CNC TECHNOLOGY CO.,LTD

Standard Free Parts List

Seq	Item	Photo	Detail
1	Cutting Tools		16pcs cutting tools for processing different materials.
2	Limit switch		2pcs electronic limit switches for free
3	Clamps		Fix the material on the aluminum alloys on the working table;
4	Collect		4pcs collect for different size cutting tools, 4mm, 6mm, 8mm, 12mm.
5	Spanner		4pcs different size spanner for install different size collects.

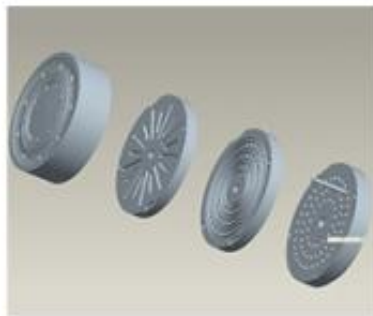
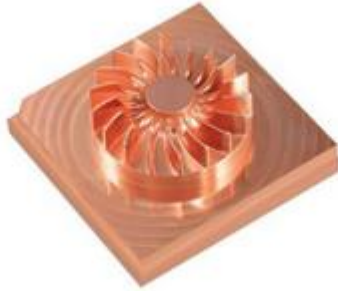
Extra Optional Parts

Seq.	Picture	Detail Instruction
1		Removable rotary axis: for processing column materials. Rotary axis fixed on the working table by screws, can be removed easily for normal use.



ANHUI WILLIAM(VICUT) CNC TECHNOLOGY CO.,LTD

Working Samples



More Photos of Machine



www.CNCVICUT.com



ANHUI WILLIAM(VICUT) CNC TECHNOLOGY CO.,LTD

Packing Photos

